

issue
forty
four

November/
December 2012

glass WORLDWIDE

BATCH AND CULLET
TREATMENT SYSTEMS
FOR THE GLASS INDUSTRY

EME
Member of **SORG** Group

WE OFFER
SUSTAINABLE
SOLUTIONS.
www.eme.de

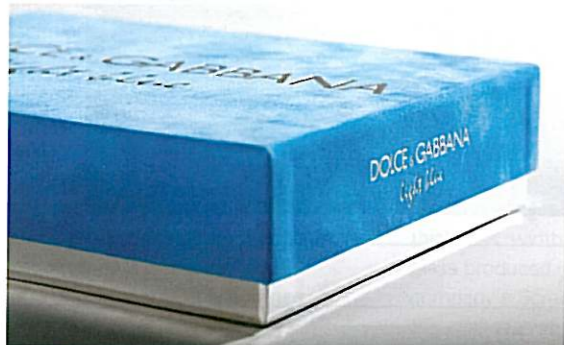


ALL IN ONE MAGAZINE: HOLLOW • FLAT • SOLAR

screen printer, tailored to the needs of cosmetics and perfume applications. This equipment shares many of the features of the larger K15 CNC series, arguably the most successful glass container printing machine worldwide. Production speeds of 3.9 pieces/min in true two colour mode are possible. Additionally, innovative in-feed robot technology makes separating worms redundant and allows for further integration of upstream automation concepts.

Keraglass Engineering presented its industrial solutions for the flat and bent tempered glass sectors, as well as in the screen printing glazing and drying sectors.

Apart from its well known products and services, 'Wave of Innovation' heralded an expanded product range for the glass industry from **Kissel + Wolf GmbH**. The company presented its established screenprinting range and latest chemical products for printing on flat and hollow glass. Azocol and Polycol emulsions are offered for various glass printing applications, while KIWO's advanced cleaning solutions are available for mechanical and manual cleaning processes. Other product innovations feature resists for sandblasting, laser ablation, etching and specialty applications, including KIWOPRINT SBR 110 for releasable protective films as well as sandblasting resist for frosting glass, PHOTOMASK FMR 215 sandblast resist, which with an appropriate coating is also suitable for deep blasting and KIWOPRINT Z 865 etch, a solvent-based, screenprintable etch and plating resist for etching glass and many metals. Separately, with KIWO flock adhesives, suede-like designs can be applied on glass and ceramic surfaces, while the overall bonding of sensitive glass surfaces for the production of glass touch panels etc is an additional special application area for KIWO UV adhesives.



Kissel + Wolf GmbH presented its established screenprinting range and latest chemical products for printing on flat and hollow glass.

Klöpper Maschinentechnik promoted its involvement in the production of flat glass processing plants and machinery, including system definition, planning, design, implementation and commissioning. With its longstanding expertise in engineering plants for the glass industry, the company also offers efficient plants for solar cell manufacture.

Kreisel exhibited a range of pressure vessels, heat exchangers, cyclones, jetpulse bag filters, double flap gate valves, two-way distributors and slide gate valves.

KTG Engineering Ltd, part of the TECO Group, promoted such products and services as electrode holders, on-site drilling and engineering services, furnace, throat and forehearth boost systems, bubbler systems, controllable drain systems, spy hole covers and screw batch chargers.

Well know of its precise dosing and weighing application for glass batch plants, **Lahti Precision** announced its Lahti Vertical Mixer brand at glasstec. Now

the complete dosing, weighing and mixing process is covered, allowing the company to guarantee good homogeneity of mixed batch. The mixer is available for low iron/extra clear glass production, including the necessary protection and wear material selection to avoid contamination. All material contact parts are nickel-free. The mixer is designed to operate as a check scale or as a real container scale, as required. It is dust sealed, has water injection nozzles for batch wetting and has a steam heating option, which includes vapour evacuation.

Land Instruments International specialises in the design and manufacture of systems and instruments for industrial non-contact temperature measurement, combustion efficiency and environmental emissions monitoring. The company manufactures radiation thermometry and thermometer systems.

Landglass Technology Co Ltd promoted a range of services involved in developing, designing and manufacturing glass tempering furnaces.

Visitors to the **George Lane & Sons Ltd** stand were shown conveyor belts for annealing and decorating lehrs carrying glass containers and glass tableware. Belts up to 5.5m wide have been manufactured and exported worldwide. Lehr belts can be manufactured in either round or flat profiled wire, depending on glassware and in many different heat-resistant materials.

LAT Maschinen- und Antriebstechnik GmbH & Co KG exhibited at glasstec for the fourth time, demonstrating the quality and reliability of its products, including stackers, pushers and plungers.

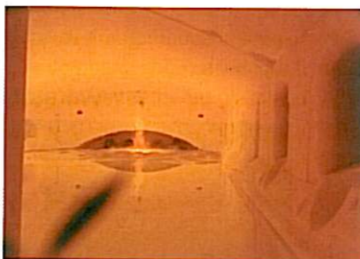
Lattimer Ltd reports that glasstec again provided an excellent shop window for its products, with enthusiastic visitor response generated to the innovations displayed. Of particular interest were the company's latest linear action tongheads and break-out device, with the promise of advance orders well into 2013. The group also announced the creation of Lattimer Glass Services, which will provide hot end on-site or in-house expertise for the repair and rebuild of IS mechanisms.

LEMA promoted a series of automatic chemical and physical

strengthening furnaces for a wide variety of glasses, as well as polariscopes for testing and glass production control.

On-line moisture and water content measurement equipment was displayed by **Liebherr**, including the Litronic FMS II system.

Innovative gas solutions for the glass industry were available from the **Linde** stand, including state-of-the-art COROX CGM (convective glass melting) burner technology. COROX low NOx, a ground-breaking glass melting solution that will significantly reduce emissions of harmful nitrous oxides to meet increasingly strict emission regulations was launched, as well as OxyService, a flexible and efficient solution for optimum use and maintaining the capacity of regenerative or recuperative glass melters.



Announced by Linde AG was COROX low NOx, a ground-breaking glass melting solution that will significantly reduce emissions of harmful nitrous oxides.

Linn High Therm promoted such products as a fast rotary bending furnace for thin glass sheets, an annealing Lehr design for thin glass sheets and an induction-heated melting/gravity casting device for glass research.

LiSEC showcased its latest technologies and systems for the flat glass industry under the slogan 'All From One'. The one-stop supplier presented innovations in glass cutting and sorting, insulating glass production, laminated glass manufacture and flat glass processing. The company's technological expertise was demonstrated with the FlyOver, a system revolutionising remnant plate handling. Furthermore, the glass machinery expert exhibited a wide range of products in the fields of automation, project planning and services.

Lizmontagens SA is one of Europe's leading refractory installation companies, focusing on the needs of the glass industry and profiting from experience gained originally in Portugal, while also successfully



www.marabu-inks.com



www.mskcovertech.com



www.mersen.com



OLIVOTTO GLASS TECHNOLOGIES

www.olivotto.it



www.tiama-inspection.com



www.omcomould.com



This selection of exhibitors ordered and provided their stand photos in this gallery. For a full list of exhibitors, visit www.glasstec-online.com

completing industrial projects abroad.

Lovati Fratelli srl exhibited NC bevelling machines for shaped glass, NC edging machines for shaped glass, NC corner machines, automatic machines with templates for edging, bevelling and polishing shaped glass and manual and semi-automatic machines - without template - for edging, bevelling and polishing shaped glass, as well as automatic robots for glass handling and custom-built lines.

Löwinger showed complete machinery for the production of pharmaceutical and technical glasses.

'Quality, reliability and innovation' was the theme of the **Lüscher AG Maschinenbau** stand. Specialising in the development and manufacture of mechanical and electronic solutions for offset, flexo and letterpress applications, appropriate modular and market-oriented customer solutions are provided.

LWN Lufttechnik GmbH promoted its strengths in the supply of complete ventilation systems for the glass industry.

As a performance-driven innovator in the pressure-sensitive industry, **MActac** displayed its applications for the glass industry.

Machines Dubuit SAS exhibited as a specialist in the manufacture of machines for direct printing onto objects in screen printing and is a supplier of annealing lehrs, decorating lehrs, raw materials and precious metals for screenprinting.

MACOTEC displayed its latest glass cutting technology that is able to respond to a variety of production needs, both for small and medium size glassworks, as well as those from large industries with high volume production.

Mappi International promoted its flat glass tempering furnaces and lamination machines.

Ink specialist, **Marabu GmbH & Co KG** showcased a wide range of organic products for both hollow and flat glass, including a UV-curable primer, designed for hot stamping with gold or silver foil. Also on show was the Ultraglass UVGL range of UV screen printing inks, which includes basic shades, high opaque shades, metallics, etch imitations and improved four colour process shades. Moreover, Marabu presented a combination of products designed to ensure good digital printing results on glass; the digital inks DUV-R and DUV-H are suitable for overprinting on the UV-curable UV-PGL primer and

opaque white liquid coatings, creating a high quality look and feel. Last but not least, visitors could check out the company's latest UV digital ink system, which opens up possibilities for glass lamination.

Established 25 years ago, **Marvalglass srl** demonstrated its complete insulating glass lines.

Marposs showed its gauging solutions and applications.

IS machine specialist, **Maul Technology** was a co-exhibitor with Biebouw, promoting its range of self-contained mechanisms, universal spare parts and variables.

Merkad Makina Kalip exhibited moulds and machinery spare parts. Products include press moulds, blow process moulds and stem moulds, as well as spare parts.

A leading supplier of suspended refractory systems and related furnace equipment, **Merkle International Inc** supplies suspended backwalls, tin bath roofs and other furnace components, as well as blanket batch chargers.

Mersen offered dedicated process solutions based on graphite and C/C composite systems for the float, container and glass fibre sectors. Areas covered include hot glass handling, with reduced maintenance and downtime and reduced oil contamination. Products on show included dead plates, take-out tongs, top plate inserts and stacker bars.

Metavil has operated in the glass moulds and accessories market since 1977 and presented solutions to challenges set by visitors.

Metra designs and produces moulds. The range on offer at glasstec went from the design of glass products, including calculating capacities and glass weight, to complete customised mould apparatus, including engineering, programming and start-up assistance.

Mistrello Officine showed its classification systems for stock glass sheets, providing solutions for large, medium and small glass factories.

Mole Moreschi promoted diamond wheels and tools for glass processing.

Morgan Thermal Ceramics showed a product range made from oxide and non-oxide ceramic materials, used in applications that utilise their thermal, chemical and mechanical properties.

Motim Fused Cast Refractories

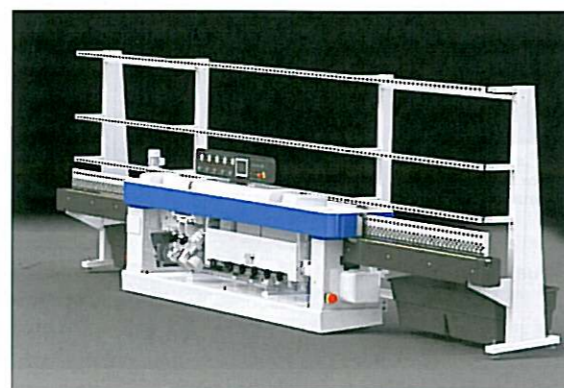
Ltd enhanced its international reputation for the production and sales of alumina-based refractory products. To satisfy customer requirements and guarantee a consistently high quality, the company adopts a quality assurance system, certified according to ISO 9002.

MSC & SGCC - see Tiama.

MSK introduced a series of developments in packaging and conveying systems for the hollow glass industry. Over the last 35 years, the company has emerged internationally as a leading supplier for cold end equipment, delivering bottle conveyors, palletisers, shrink hood machines for securing loads, shuttle cars, pallet conveyor techniques and associated control software. Additional modules include the MSK Looptech for securing several layers of bottles, label techniques, cardboard erectors and MSK EMSY software. Packaging solutions from semi-automatic systems to complete fully automatic machines are offered.

MT Forni Industriali srl demonstrated its specialisation in glass melting furnaces, annealing and decoration lehrs and bending furnaces.

Having established its presence in the market with a series of vertical and horizontal washing machines, **Neptun** exhibited a complete range of high performance glass processing machines. glasstec saw the launch of the straight-line edger Rock with its exclusive ETS (Edge to Shape) function, the Rock 10/45 mitering machine and the Promax vertical NC grinding machine.



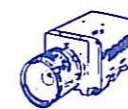
Rock 10/45 mitering machine from Neptun.

North American Refractories Co is a supplier of bonded refractories. Products include chrome-alumina (particularly for the glass wool sector), 90%-99% alumina, bonded and sintered AZS, zircon, sillimanite, mullite, magnesite and clay. The company also produces apparatus for oxy-fuel furnaces.

Novamoules showed its experience in manufacturing small moulds and related accessories for hollow glass (suitable for food and beverages, pharmaceuticals and cosmetics). The company specialises in neck rings, guide rings, plungers requiring total or partial metallisation, as well as small but complex moulds thanks to its CAD/CAM system.

OCMI-OTG SpA is a leading manufacturer of machinery and systems for glass tube processing and machinery and systems for the production and processing of hollow glass. It has three subsidiaries: Moderne Mecanique manufactures glass tube processing machinery, lines and accessories; Amig produces hollow glass production machinery and equipment; and OTG makes special transmission members and related components.

Exhibiting technologies, products and services derived >



Optische Prüfsysteme
Dr. Günther

www.optical-inspections.com



POCO
GRAPHITE

An Entegris Company

www.poco.com



www.parkinson-spencer.co.uk



Pyrotek™
Improving Performance

www.pyrotek.info/glass



www.pennine.org



Quantum

www.quantumforming.com



This selection of exhibitors ordered and provided their stand photos in this gallery.
For a full list of exhibitors, visit www.glasstec-online.com